



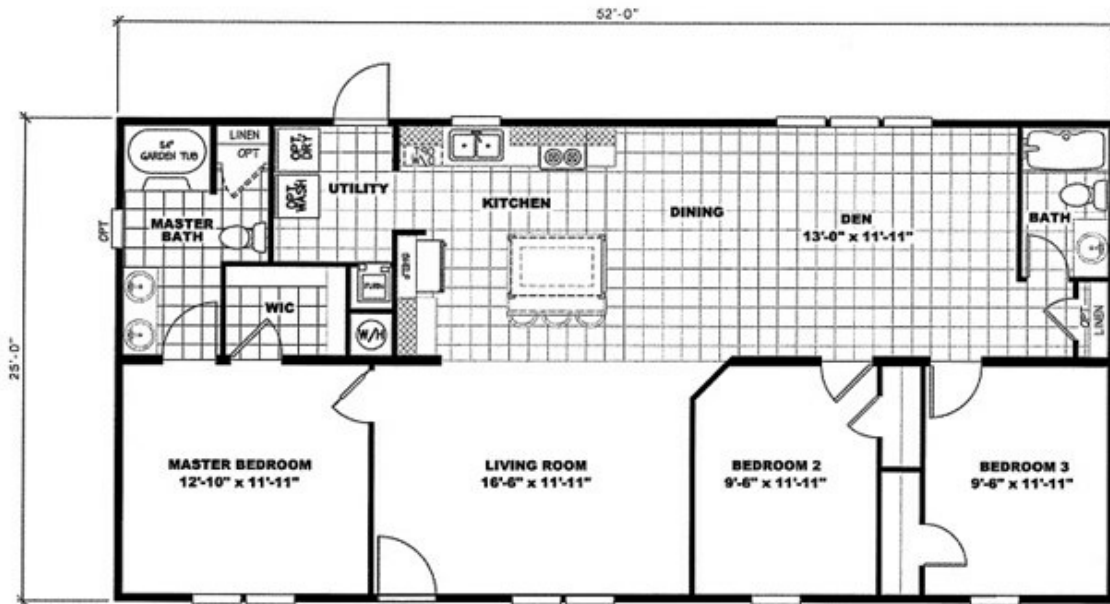
2551 52X25 CK3+2 TPS MOD



**2551 52X25 CK3+2 TPS
MOD**

Floor plan number: RIC249509NCABM

3 beds • 2 baths • 1300 sq.ft. • 25' width • 52' depth



Our home building facilities invest in continuous product and process improvements. Plans, dimensions, features, materials, specifications and availability are subject to change without notice or obligation. Renderings and floor plans are representative likenesses of our homes and may differ from the actual homes. We invite you to tour a Home Center near you and inspect the highest value in quality housing available or call (336) 249-7041 to speak with a Home Consultant. Copyright 2017, CMH. All rights reserved.

CLAYTON HOMES-LEXINGTON

828 PIEDMONT DRIVE
LEXINGTON, NC 27295

Monday - Thursday: 9am - 6pm
Friday: 9am - 5pm
Saturday: 9am - 5pm
Sunday: Closed

(336) 249-7041